

**Leading  
integrated  
design and  
project delivery  
services with  
single line  
accountability.**

**North Island**

22a Kaimiro Street  
PO BOX 20020  
Te Rapa  
Hamilton  
P. 07 850 0300

**South Island**

17 Ron Guthrey Road  
PO BOX 14132  
Christchurch Airport  
Christchurch  
P. 03 358 9185

**DESIGN +  
CONSTRUCTION**

[apolloprojects.co.nz](http://apolloprojects.co.nz)

**Apollo**  
PROJECTS

**Cold  
Storage**

Award-winning design  
and construction  
specialists

**Apollo**  
PROJECTS





# We design and build smart cold storage facilities, for dairy to produce, and everything in between.

To keep food at the right temperature and work efficiently requires having the right building materials and designs. At Apollo Projects, we work with clients to get the best results for their cold storage projects, creating intelligent building designs that use energy efficiencies and reduce waste.

Our projects have included working with Bidvest to build its coldstore, chiller dry goods and produce facility in Dunedin; and constructing a 12,000m<sup>2</sup> distribution centre for Foodstuffs in Palmerston North. From the Foodstuffs centre, frozen and chilled products are distributed to supermarkets all the way from Wellington to Waiouru.

Bulk storage and inventory systems are always evolving, and having the right setup for your facility is important for maximising what your company can achieve. We look at client's inventory systems and use them to guide what will work best in their new facility. This ensures the building will not only store products the right way but will work with the way the inventory is managed.

We partner with clients from start to finish, making the full journey of your project as smooth as possible. That means we take care of managing resource and building consent applications; craft structural and thermal building designs; and find the right flow design for storage.

Apollo Projects will work with you to deliver a cold storage facility you can be proud of.



Foodstuffs

## Your trust is everything to us.

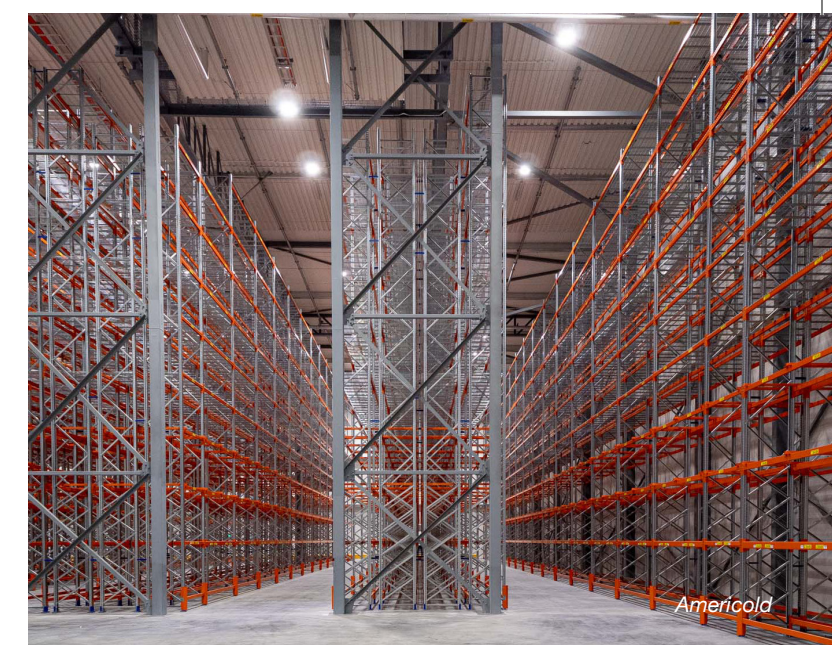
Apollo Projects has been delivering stunning facilities for organisations across Aotearoa since 2001. Our years of experience and highly skilled team ensure your building performs at its best, includes sustainable design, and is a project you can be proud to own.

When our founding directors, Craig Waghorn and Paul Lloyd started Apollo, they were determined to do things differently. They wanted to partner with clients from the very start and take peoples' building ambitions from concept all the way to reality – something the industry hadn't been doing.

We've grown a lot since those early days, but we've never lost sight of what matters most to us – building trusting relationships with the people we serve. It's central to the way we work.

Apollo Projects is different simply because we do the mahi as your partner and use our expertise to ensure your completed facility does what it should, on time and within budget.

It's our belief that a client's trust is everything, and we are as committed to this today as we were the day it all began.



Americold

## We raise the bar and lead the way.

At Apollo Projects, we've never been afraid to raise the bar even higher and set new standards for what is possible. For us, success isn't something you leave to chance. We believe that the best buildings start with a solid foundation – their design.

Unlike other construction companies, we'll partner with you from the very start to ensure your design works for you. This means getting involved in your project at the beginning and taking the journey with you right up until we hand you the keys.

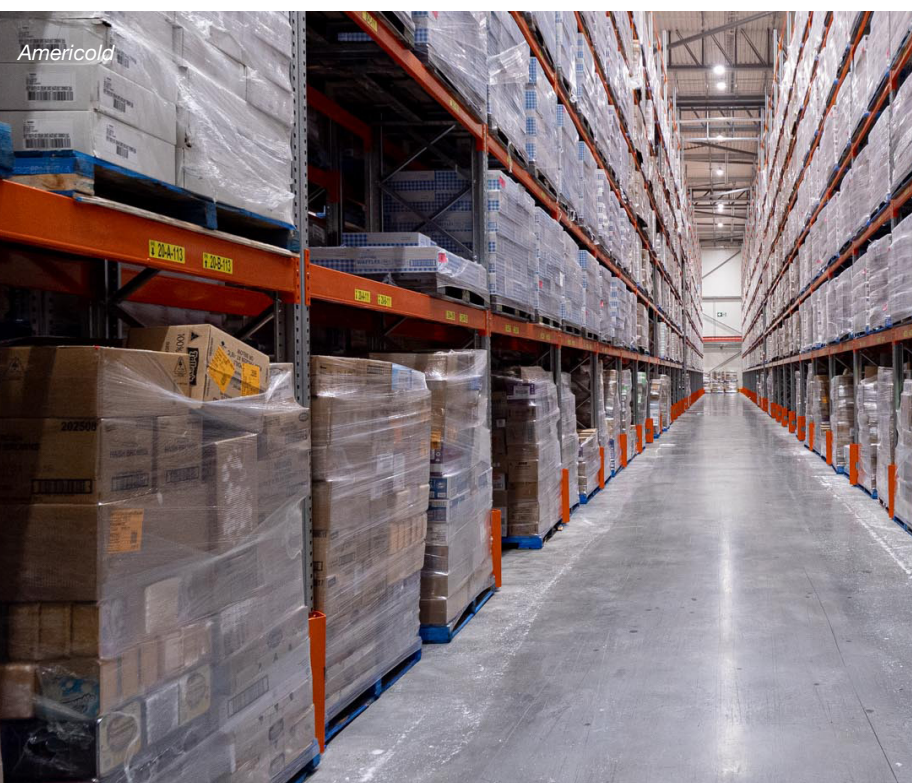
We listen to your needs, talk to the right trades early, and craft innovative solutions that ensure your building performs as it should. It's a way of working that reduces the risk of your project needing costly design changes down the track.

Our experts know what works and what doesn't, and our partnerships with key consultants and contractors ensure you're getting competitive prices, quality and performance, every time.

Talk to us today about making your project a reality.



Americold



Americold

"The professionalism that Apollo Projects have shown throughout the Edendale Redline upgrade is to be commended. This project had a challenging time constraint window which Apollo managed extremely well, and now the site has one of the best redlines in a Milk Treatment area in the country."

Julie Walkinshaw, Plant Manager  
Fonterra Cooperative Group



Americold